

World Amity AllianceTM

Imagine magnifying your charitable impact through the power of community. Your contribution, joining countless others, creating waves of change far beyond what one can achieve alone.

As the year concludes and a new horizon beckons, we invite you to glimpse the vision of the World Amity Alliance.

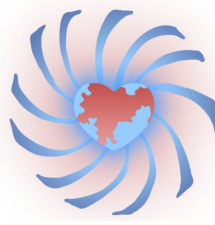
Dive into this exclusive preview to uncover:

- Our drive to reshape charitable giving.
- Crucial causes we champion and their significance.
- Our unyielding commitment to transparency and community impact.

By the end, you'll grasp a game-changing truth: Giving together isn't just better—it's revolutionary.

Come January 2024, be at the heart of a revolution poised to change the world.

EMPOWERING CHANGE, TOGETHER.



What Is World Amity Alliance?

At its core, World Amity Alliance isn't just another charitable organization. It's a movement, a philosophy, a vision for a brighter, more equitable world. But what truly makes us stand apart?

1. A Global Tapestry of Causes:

We don't limit ourselves to one cause or one region. We encompass a kaleidoscope of challenges faced globally, ensuring our efforts touch diverse lives and landscapes.

2. The Strength of Unity:

Every subscriber, every donor, every advocate—forms the backbone of World Amity Alliance. This isn't a solitary journey. It's a collective march towards creating lasting change.

3. Innovative Charity Redefined:

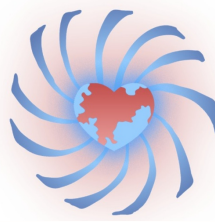
Traditional giving is transformed into a dynamic, impactful endeavor. By consolidating resources and targeting a spectrum of causes, we elevate the entire paradigm of charitable contributions.

4. An Ongoing Conversation:

We're not just about collecting funds. We foster a continuous dialogue with our community, sharing stories, challenges, victories, and most crucially, the tangible difference made by collective giving.

5. Beyond Transactions:

Every subscription isn't viewed as a mere transaction but as a trust placed in our vision. It's a pact between us and our subscribers, a shared commitment to bettering our world, one cause at a time.



Why World Amity Alliance?

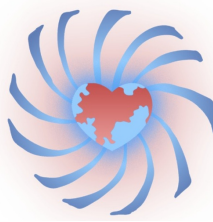
In a world brimming with causes needing attention and hearts eager to help, we often found ourselves at a crossroads. The desire to give was vast, but the challenges in executing effective, diversified, and transparent charity were real.

The Dilemma: With so many deserving charities, how do we choose just one? How can our donation make the broadest impact? And how can we ensure every dollar truly counts?

The Revelation: The power of unity. The strength in numbers. The magnified impact of a collective effort.

World Amity Alliance was conceived from a simple yet profound realization: Together, we can achieve more. By pooling our resources, focusing on diverse causes, and leveraging the strength of community, we can redefine charitable giving.

Individual vs. Community Giving: A single drop can make a ripple, but a united front can create waves. Imagine the possibility of your personal contribution reaching not just one, but 36 different charities across a myriad of causes annually. The scope broadens, the effect intensifies, and the change becomes palpable.



How World Amity Alliance Works!

Navigating the vast landscape of charitable giving can be daunting. With myriad causes and organizations vying for attention, how does one ensure their donation is making the right kind of impact? Enter World Amity Alliance, with a solution that's as innovative as it is effective.

1. Choose Your Commitment:

Select a subscription level that resonates with you. Whether it's a modest monthly amount or a more substantial contribution, every bit counts.

2. Pooling the Power:

Your subscription joins those of countless others, forming a robust pool of resources. Together, we stand stronger and reach farther.

3. Diversified Allocation:

Every month, we focus on a unique cause, dividing the combined contributions among three carefully chosen charities that champion that cause. This means your donation benefits 36 different charities over a year, ensuring a diverse, widespread impact.

4. Complete Transparency:

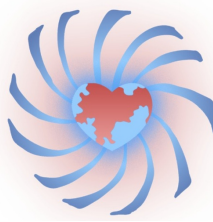
Stay informed every step of the way. From detailed breakdowns of fund allocations to the tangible change your contributions are driving, we keep you looped in. You'll always know where your money is going and the lives it's touching.

5. Community Over Individual:

By leveraging collective giving, we ensure that your donation—while personal and heartfelt—transcends individual boundaries. It becomes part of a more significant movement, a united front against the world's most pressing challenges.

CONTINUE TO SEE THE CAUSES WE WILL BE

HELPING IN 2024



Veterans

Every day, brave men and women lay down their lives, risking it all for the safety and freedom of their nations. However, once their service concludes, many veterans face unprecedented challenges - from battling mental health issues to grappling with economic instability.

Why it's Important:

No individual who has selflessly served their nation should be left struggling within its borders. Supporting veterans means providing them with the resources, care, and opportunities they deserve in civilian life.

How Donations Make a Difference:

Every contribution channeled towards veterans aids in providing mental health support, job training, housing assistance, and ensuring their dignity and well-being in the society they once vowed to protect.

Child Protection

Every child deserves a safe, nurturing environment to grow, learn, and thrive. Yet, startlingly, countless children across the globe confront abuse, neglect, and exploitation, often in places they should feel safest.

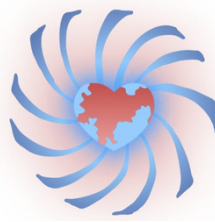
Why it's Important:

Children are the bedrock of our future. Ensuring their safety and well-being isn't just a moral obligation but an investment in a more compassionate, progressive world.

How Donations Make a Difference:

Contributions towards child protection fund initiatives that combat child exploitation, support trauma counseling, and build safer environments. They ensure every child has the chance to lead a life free from harm and full of potential.





Cancer

This menacing disease has touched countless lives worldwide, indiscriminately affecting individuals across all ages, races, and backgrounds. Though we've made strides in treatment and research, the fight against cancer remains relentless.

Why it's Important:

Cancer is more than just a medical condition; it's a societal challenge that impacts families, communities, and economies. Early detection, research, and holistic care can significantly alter the course of this battle.

How Donations Make a Difference:

Funds channeled towards cancer support groundbreaking research, patient care, and awareness campaigns. These contributions are essential to developing innovative treatments, supporting affected families, and driving early detection initiatives.



Substance Abuse

Millions grapple with the chains of addiction, be it alcohol, drugs, or other substances. Substance abuse isn't just a personal battle; it reverberates through families, workplaces, and communities.

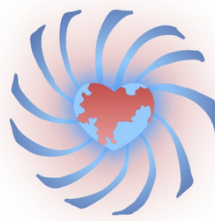
Why it's Important:

Behind every statistic of substance abuse is a story of lost potential, strained relationships, and societal cost. Addressing this issue head-on means offering hope, rehabilitation, and the prospect of a life unburdened by addiction.

How Donations Make a Difference:

Donations towards substance abuse are channeled into rehabilitation programs, mental health support, awareness campaigns, and community outreach. Every dollar helps rebuild lives, restoring hope and purpose to those ensnared by addiction.





Family

Families, in all their diverse forms, are the pillars upon which societies are built. Yet, many families face challenges—from economic hardships to internal conflicts—that threaten their stability and well-being.

Why it's Important:

A strong family foundation creates a ripple effect, benefiting communities and societies at large. Supporting families ensures that every individual, regardless of background, has a stable environment to grow, learn, and thrive.

How Donations Make a Difference:

Donations aimed at supporting families fund programs that provide economic aid, counseling, educational resources, and conflict resolution. Every dollar strengthens the familial bonds that hold our society together.



Mental Health

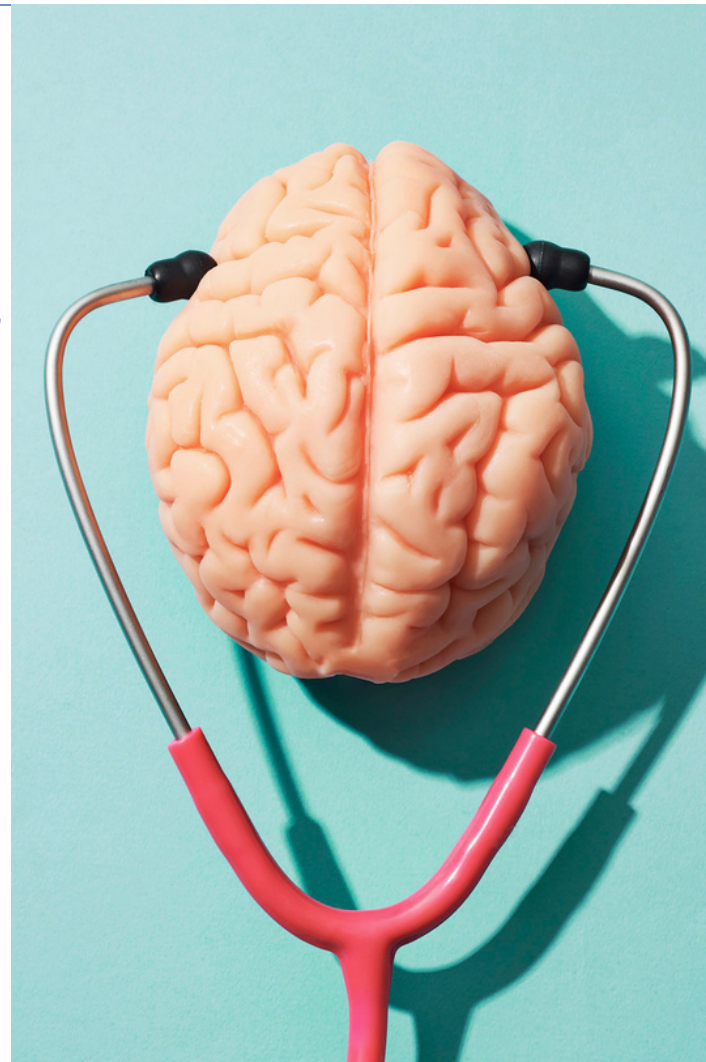
In the rapidly evolving landscape of our modern world, mental health challenges have become a silent epidemic. From anxiety to depression, millions find themselves grappling with issues that often go unnoticed and untreated.

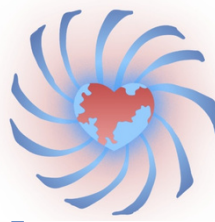
Why it's Important:

Mental well-being is as crucial as physical health. Ensuring that everyone has access to the resources, counseling, and support they need is fundamental to building resilient, thriving communities.

How Donations Make a Difference:

Funds directed towards mental health initiatives support counseling services, awareness programs, research into innovative treatments, and destigmatization campaigns. Your contributions help light the path to healing and understanding.





Environment

Our planet, with its rich tapestry of ecosystems, is under threat. From climate change to deforestation, the challenges we face are monumental, requiring collective action and stewardship.

Why it's Important:

The environment is our shared home. Protecting it ensures not just our well-being but the survival and prosperity of future generations. Every tree saved, every emission reduced, counts.

How Donations Make a Difference:

Contributions towards environmental causes support reforestation projects, wildlife conservation, climate action initiatives, and sustainable community education. Together, we can craft a green, vibrant future.



Education

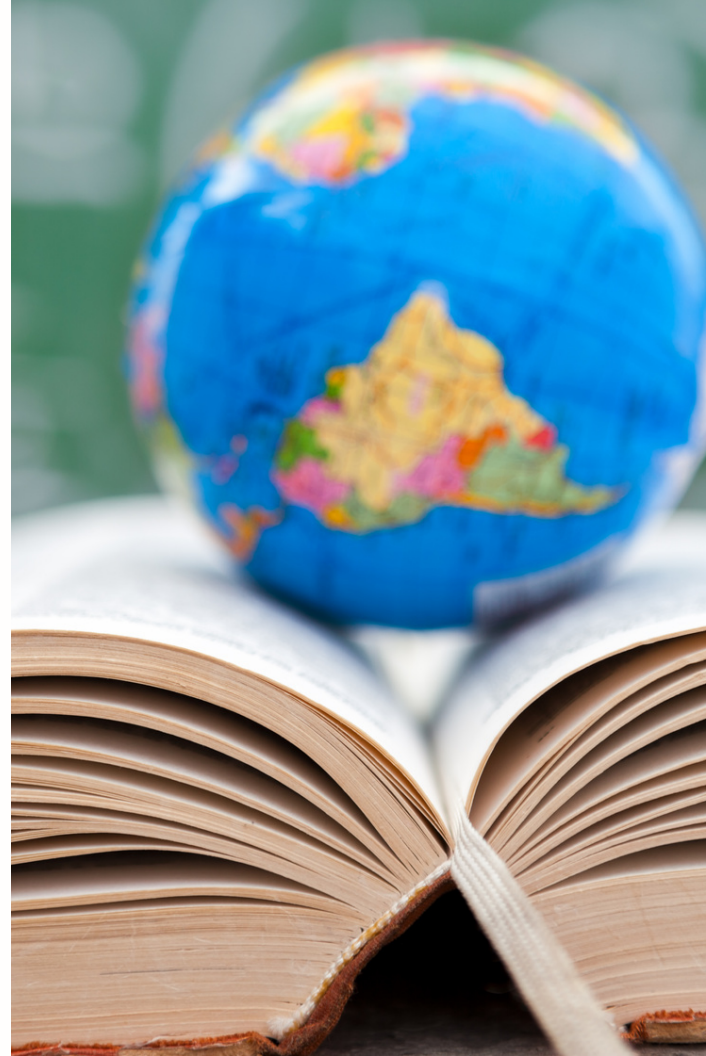
Knowledge is the cornerstone of progress. Yet, millions worldwide remain deprived of basic education, denying them opportunities and a brighter future.

Why it's Important:

Education opens doors, fuels innovation, and is the bedrock of societal progress. Every child deserves the tools to shape their destiny and contribute positively to the world.

How Donations Make a Difference:

Donations focused on education enable the building of schools in underserved areas, provide essential learning resources, support teacher training, and facilitate innovative learning programs. Through education, we empower dreams and aspirations.





Animals

Our planet's biodiversity is rich and varied, but many species face threats, from habitat loss to direct human-induced challenges. Ensuring the welfare of animals is about maintaining the intricate balance of our ecosystems.

Why it's Important:

Animals play a crucial role in our global ecosystem. Protecting them is not only an act of compassion but essential for maintaining ecological harmony.

How Donations Make a Difference:

Funds dedicated to animal welfare aid in conservation efforts, anti-poaching initiatives, habitat restoration, and education about coexistence. Every effort made safeguards the myriad species that share our planet.



World Hunger

Despite global advancements, hunger remains a persistent challenge. Millions go to bed hungry every night, with food insecurity affecting individuals in both developing and developed nations.

Why it's Important:

Access to nutritious food is a basic human right. Combatting hunger is about ensuring a life of dignity for all and setting the foundation for a healthier, more prosperous global community.

How Donations Make a Difference:

Contributions targeted towards alleviating hunger support food distribution programs, agricultural education, and initiatives that address the root causes of food scarcity. Every meal provided is a step towards a hunger-free world.





Homelessness

In cities and rural areas alike, countless individuals lack the basic right to shelter, facing daily uncertainties and challenges that come with homelessness.

Why it's Important:

Every individual deserves the safety and stability of a home. Addressing homelessness is not just about providing shelter but ensuring a holistic approach to rehabilitation, integration, and prevention.

How Donations Make a Difference:

Contributions aimed at mitigating homelessness support housing projects, skill training programs, mental health services, and initiatives that target the root causes of displacement. Each donation paves the way for someone to regain their footing in society.



Human Rights

Across the globe, individuals face rights violations - from restricted freedoms to direct persecutions. Upholding human rights is fundamental to ensuring justice, equality, and dignity for all.

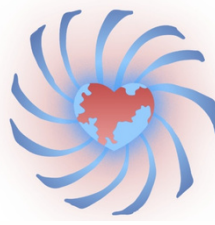
Why it's Important:

Human rights are the pillars of any just society. Defending them ensures that every individual, irrespective of their background, can live without fear and with the freedoms they inherently deserve.

How Donations Make a Difference:

Donations channeled towards human rights support advocacy campaigns, legal aid services, educational initiatives, and efforts to challenge and change oppressive systems. Every stand taken is a step towards a just, equitable world.





Maximize your Charitable Impact

Join the World Amity Alliance: Uniting for Greater Impact

In the realm of giving, each of us holds the power to make a difference. Yet, when we unite, this power multiplies, creating ripples of change that can span the globe. This is the heart of World Amity Alliance's mission.

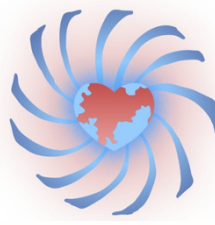
A New Chapter in Charitable Giving

Traditionally, charitable giving has often been a solitary act, with individuals contributing to one or a few organizations. World Amity Alliance transforms this norm by offering a path to collective impact. For a monthly contribution of just \$50 – a total of \$600 annually – you become part of a community that reaches further, together.

Amplify Your Impact

This approach isn't just about donation; it's about amplification. Your yearly subscription extends your helping hand to 36 different charities, each carefully selected to represent a diverse range of causes every month. In essence, you're not just supporting a single charity; you're championing a myriad of causes, each month focusing on three distinct charities under one broader theme.

THANK YOU FOR TAKING THE TIME IN LEARNING MORE
ABOUT WORLD AMITY ALLIANCE!



Maximize your Charitable Impact

Strength in Numbers

There's strength in numbers, and this is especially true in the realm of philanthropy. By joining World Amity Alliance, your individual contribution becomes part of a powerful collective effort. Together, we can address complex, global challenges more effectively than any of us could alone.

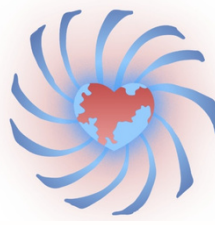
Cost-Effective and Inclusive

Our model is designed to be both inclusive and cost-effective. By pooling our resources, we ensure that your generosity is maximized, allowing for a broader and deeper reach than traditional charitable donations. It's about making every dollar count, and making sure that your contribution has the greatest possible impact.

Building a Community of Changemakers

As a member of the World Amity Alliance, you're not just a donor – you're an integral part of a global community of changemakers. You're joining hands with like-minded individuals who believe that together, we can create a more compassionate, equitable world.

THANK YOU FOR TAKING THE TIME IN LEARNING MORE
ABOUT WORLD AMITY ALLIANCE!



Promises

At World Amity Alliance, trust and transparency form the bedrock of our operations. As we journey together towards making a tangible difference, here are the promises we pledge to uphold:

Purposeful Use of Funds:

Every dollar you contribute serves a purpose. A significant majority, 96%, directly supports the charities. The remaining portion ensures our operations run smoothly and efficiently, laying the groundwork for greater outreach and impact.

Total Transparency:

We value the trust you place in us. Our facts & figures page is updated regularly, giving you insights into how donations are allocated. This transparency ensures you're always in the know about your contributions' journey.

Voice of the Community:

Every donation made resonates with the collective voice of our community. All contributions are signed "from the World Amity Alliance Community," a testament to the unity and collective spirit we cherish.

Open-Door Policy:

Whether it's feedback, queries, or concerns, we're here to listen. Our doors (and inboxes) are always open. We believe in fostering a two-way communication channel to continually refine and enhance our endeavors.

THANK YOU FOR TAKING THE TIME IN LEARNING MORE
ABOUT WORLD AMITY ALLIANCE!